

BIM EN CIUDADES INTELIGENTES

Roberto Mikse

Director de Autodesk para América Latina





A large crowd of people in a city street, overlaid with text. The background shows a dense crowd of people walking down a city street, with buildings and signs visible in the distance. The text is centered and reads:

10 000 Millones
DE PERSONAS EN 2050





A construction site in a city with cranes and skyscrapers in the background. The scene is filled with steel beams, scaffolding, and workers. The sky is clear and blue.

68%

EN LAS CIUDADES EN 2050



3600

EDIFICIOS MÁS POR DÍA









Autodesk

*Habilitando a nuestros clientes para hacer **mas con menos** y con el **mejor** impacto al planeta.*





Futuro sostenible basado en innovación

FAST COMPANY

The 10 most innovative data science companies of 2020



TOP 10



Rank	Name	Acknowledgment
1	STRAVA	For getting cities on the right track to support cyclists and runners
2	WATTPAD	For scripting a new future for turning books into hit movies
3	CLIMACELL	For sensing a new way to measure hyperlocal weather, down to the city block
4	MODA OPERANDI	For empowering fashion designers with trend insights before production
5	AUTODESK	For converting 150 million construction issues into better site safety and quality
6	DUALITY TECHNOLOGIES	-

Source: [fast.companies.com](#), 2020

2020

Corporate Knights
Most Sustainable Corporations in the World

GLOBAL100

Sustainability goes beyond the economic, it transcends social innovation and solutions that improve the environment

Rank	Name	Country
1	Orsted A/S	Denmark
2	Chr. Hansen Holding A/S	Denmark
3	Neste Oyj	Finland
4	Cisco Systems Inc.	USA
5	Autodesk Inc.	USA
6	Novozymes A/S	Denmark
7	ING Groep NV	Netherlands
8	Enel SpA	Italy
9	Banco do Brasil SA	Brazil

Source: [corporateknights.com](#), 2020

COP21 MAJOR OUTCOMES

5 Key Elements of the Paris Agreement



Every 5 years countries
STRENGTHEN
CLIMATE
ACTIONS

ENHANCED
TRANSPARENCY

CLIMATE
FINANCE

ADAPTATION
is a central pillar
to help world's
most vulnerable

187
COUNTRIES
AGREED TO SIGN

127+
WORLD LEADERS
AGREED TO SIGN
THE PARIS CLIMATE
AGREEMENT

400+
COUNTRIES
COMMITTED TO
REDUCE CO₂
EMISSIONS BY
2030

\$1T
IN CLIMATE
FINANCING
NEEDS TO BE
MOBILIZED BY
2030

114+
CORPORATIONS
AND UNIVERSITIES
PLEDGE TO UPHOLD
PARIS AGREEMENT

20
COUNTRIES
AGREED TO
REDUCE CO₂
EMISSIONS BY
2030

NEWS

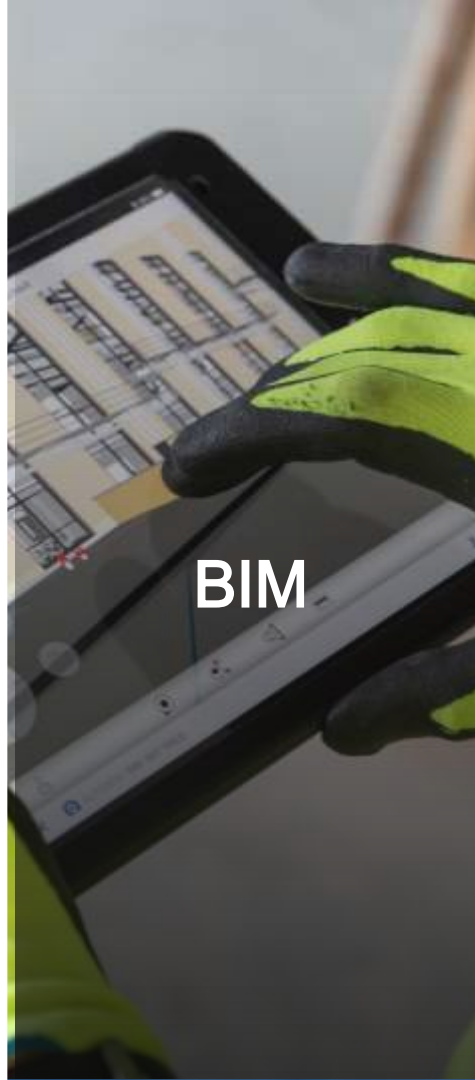
Apple, Google, Autodesk leaders pledge to uphold Paris agreement

The U.S.'s largest corporations and universities join hundreds of cities and states in coordinated climate action

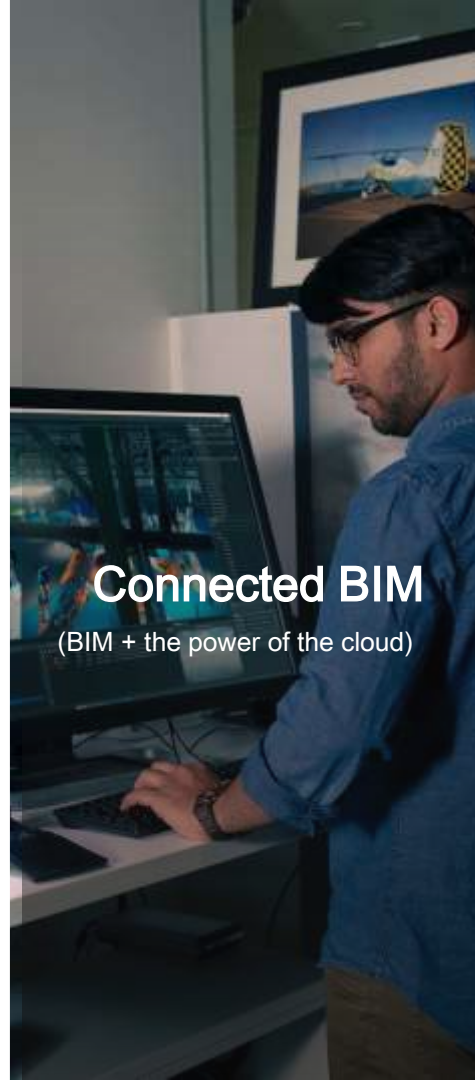
By [Allison Walker](#) | [Greenwire.com](#) | Jun 5, 2017, 5:05am EDT



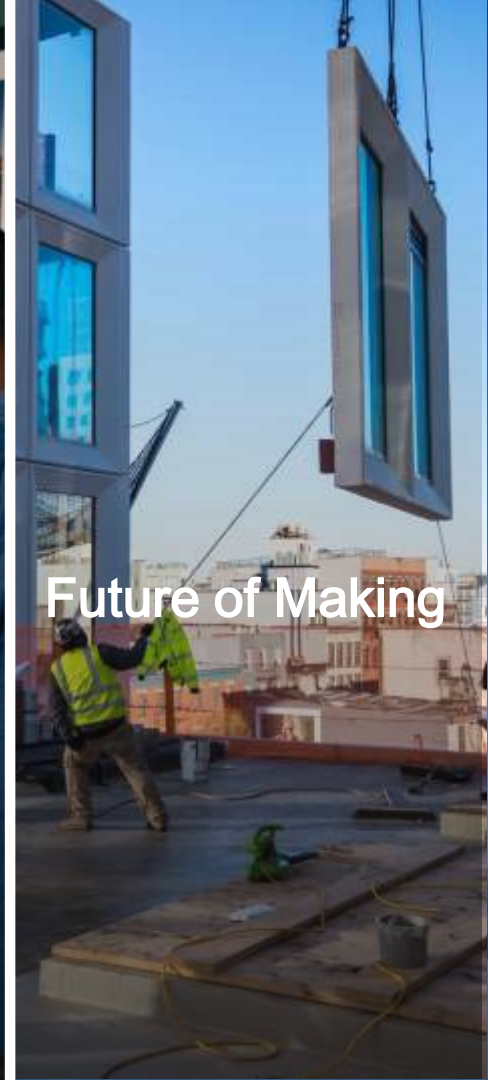
CAD



BIM



Connected BIM
(BIM + the power of the cloud)



Future of Making



DESIGN

BIM

BUILD

OPERATE

BIM es la columna vertebral de la transformación digital

PROCESOS
HOLISTICOS
BASADOS SOBRE
UN MODELO 3D

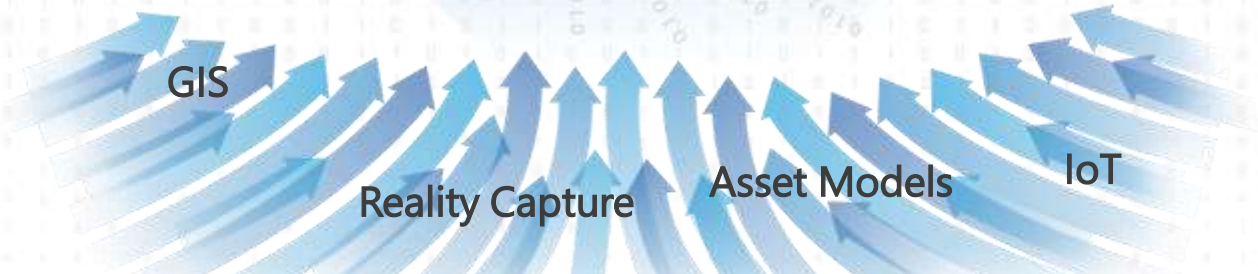
CONSTRUIDO
SOBRE UNA
EXPERIENCIA DE
DATOS
CONECTADOS

INTEGRA DATOS
MULTI
FUNCIONALES
ESTRUCTURADOS

En ciudades BIM empodera la toma de decisiones para acelerar los resultados que mejoren la calidad de vida



Ciudades inteligentes y sostenibles



LA REALIDAD DE LAS CIUDADES

>2/3 DEL CONSUMO
ENERGÉTICO

90% LOCALIZADAS EN
ZONAS
COSTERAS

70% DE EMISIONES
DE CO2

2X CRECIMIENTO
PROYECTADO
PARA EL

An aerial view of a dense city skyline at dusk. The sky is filled with soft, colorful clouds in shades of blue, green, and orange, with a faint rainbow visible in the upper right. The city below is a mix of modern glass skyscrapers and older, more densely packed buildings. The overall atmosphere is serene and futuristic.

Bienvenido a la
era de la conexión

TENDENCIAS DE INDUSTRIA PARA CONSEGUIR CIUDADES INTELIGENTES Y SOSTENIBLES

EDIFICACIONES
DE ALTO
RENDIMIENTO Y
EFICIENCIA
ENERGÉTICA

BAJO
DESPERDICIO Y
MODELOS DE
ECONOMÍA
CIRCULAR

INFRAESTRUCTURA
MULTIMODAL
INTERCONECTADA

THINGS



MAKING



WORK



ALTO RENDIMIENTO Y BAJO DESPERDICIO

*En tiempo **record** fue posible construir **hospitales de emergencia** en diferentes países de la región, gracias al uso de **prefabricados**.*





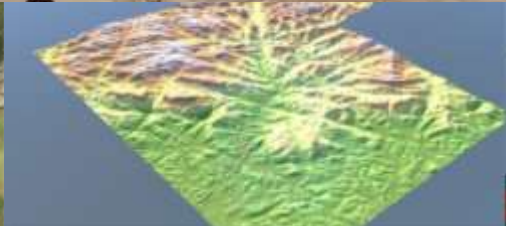
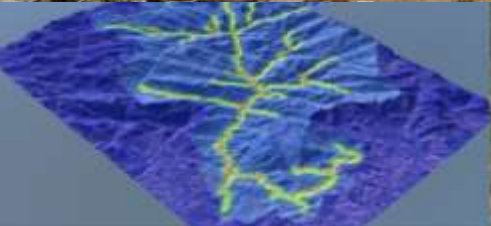
*\$ 2B USD Treatment Plant (167 Has)
5 million constructive elements in a multidisciplinary project
Source: ICA, México City*





INFRAESTRUCTURA MULTIMODAL INTERCONECTADA





Source: [unreadable text]



ESPIRITU SANTO,
BRASIL

MITIGACION DE RIESGOS

CHUVA 5mm



Nancy
Residente

- 5 GENDER EQUALITY
- 8 DECENT WORK AND ECONOMIC GROWTH
- 10 AFFORDABLE AND CLEAN ENERGY
- 17 PARTNERSHIPS FOR THE GOALS

MEJORANDO LAS CONDICIONES DE VIDA



TRANSFORMACION DIGITAL PARA
CIUDADES SOSTENIBLES E INTELIGENTES



AUTODESK®

Make anything™